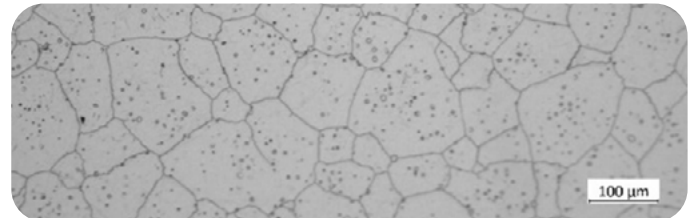
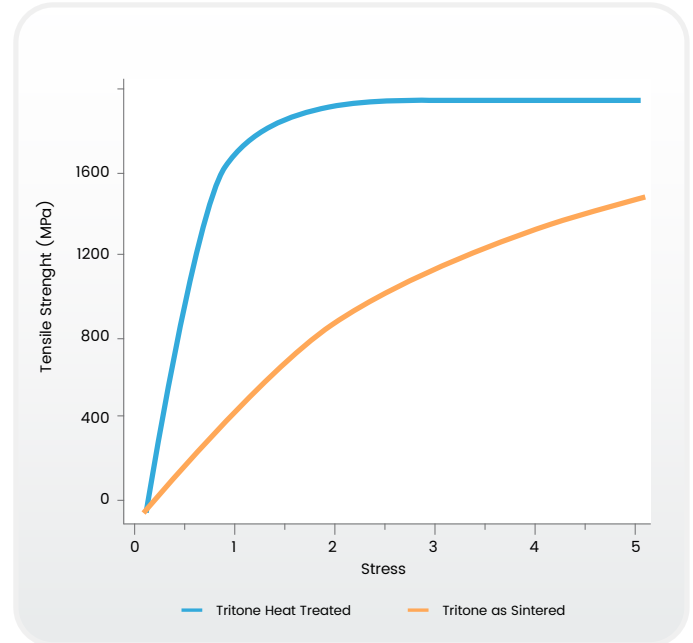


## MATERIAL DATASHEET

# H13 TOOL STEEL

### COMPOSITION (ASTM A681)

Composition	Amount
Chromium	4.75-5.5%
Molybdenum	1.10-1.75%
Vanadium	0.8-1.2%
Silicon	0.8-1.25%
Carbon	0.32-0.45%
Manganese	0.2-0.6%
Phosphorous	0.03% max
Sulfur	0.03% max
Iron	Bal.



### MECHANICAL PROPERTIES

	Test Standard	Tritone as sintered	Tritone heat treated	Wrought ASTM A276
Ultimate Tensile Strength	ASTM E8	1240 MPa	1679 MPa	1580 Mpa
0.2% Yield Strength	ASTM E8	750 MPa	1421 MPa	1360 Mpa
Elongation at Break	ASTM E8	3%	5%	14%
Hardness	ASTM E18	37 HRC	50 HRC	46 HRC
Relative density	ASTM B962	95%		100%

The mechanical properties are typical values obtained by independent laboratory from parts processed in an industrial sintering furnace.