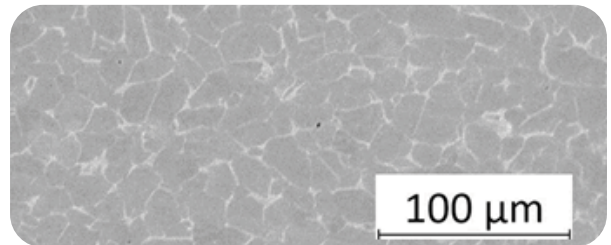
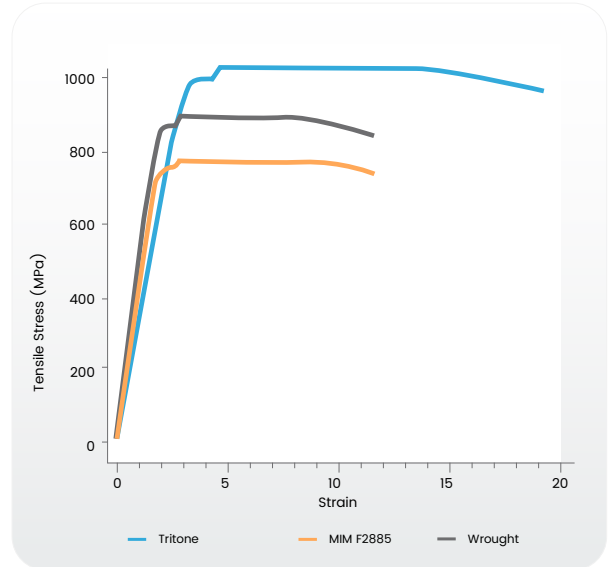


MATERIAL DATASHEET

TITANIUM 6AL-4V

COMPOSITION (ASTM B348/F2885)

Composition	Amount
Aluminum	5.50-6.75%
Vanadium	3.50-4.50%
Carbon	0.08%max
Oxygen	<0.25% max
Iron	0.30%
Titanium	Bal.



MECHANICAL PROPERTIES

Properties	Test Standard	Tritone	MIM ISO F2885	MIM ISO 22068	Wrought ASTM B348
Ultimate Tensile Strength	ASTM E8	960 MPa	780 Mpa	800 Mpa	895 MPa
0.2% Yield Strength	ASTM E8	890 MPa	680 Mpa	600 Mpa	828 MPa
Elongation at Break	ASTM E8	14%	10%	3%	10%
Relative density	ASTM B962	97%	96%	95%	100%

The mechanical properties are typical values obtained by independent laboratory from parts processed in an industrial sintering furnace.