

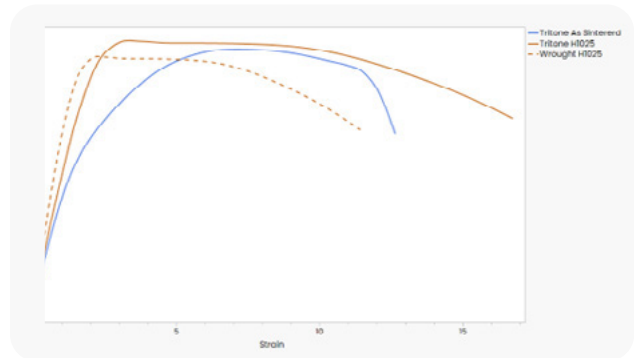
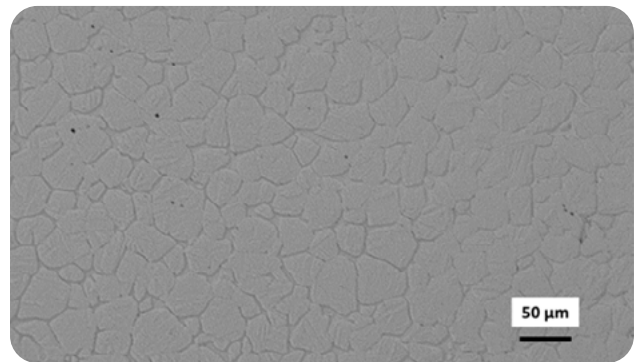
## MATERIAL DATASHEET

# 15-5 PH STEEL

Large Container: 50-MTLP-0155 | Small Container: 50-MTLP-1155

### COMPOSITION (ASTM A564-06)

Composition	Amount
Carbon	0.07% max
Silicon	1.0% max
Manganese	1.0% max
Phosphorous	0.04% max
Sulfur	0.03% max
Chromium	14.0-15.5%
Nickel	3.5-5.5%
Copper	2.5-4.5%
Niobium + Tantalum	0.15-0.45%
Iron	Bal.



### TYPICAL MECHANICAL PROPERTIES

Properties	Standard	Tritone As sintered	Tritone H1025	Wrought H1025 ASTM A564
Ultimate Tensile Strength	ASTM E8	1100 MPa	1135 MPa	1070 MPa
0.2% Yield Strength	ASTM E8	780 MPa	1090 MPa	1000 MPa
Elongation at Break	ASTM E8	6%	15%	12%
Hardness	ASTM E18	28 HRC	36 HRC	35 HRC
Relative Density	ASTM B962	>98%		100%

The mechanical properties are typical values obtained by independent laboratory from parts processed in an industrial sintering furnace.