



# Paste Tube Sensor Calibration

File number: 60-PSTN-0001

Revision: 1.0

January 26, 2023

# Contents

1.	Purpose .....	2
2.	Equipment and Materials.....	2
3.	Paste Tube Sensor Calibration .....	3
4.	Revision History.....	8

# 1. Purpose

---

Provide instructions on paste tube sensor calibration.

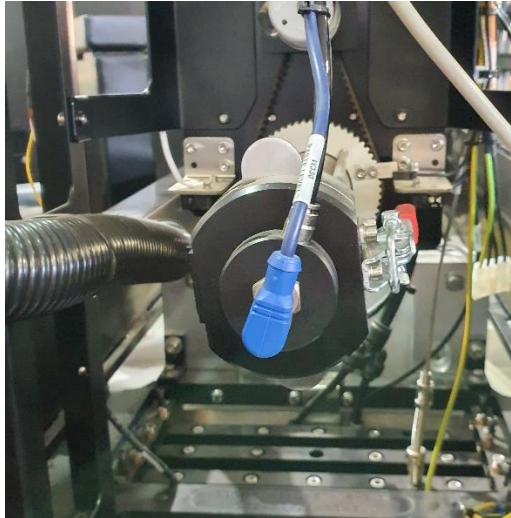
## 2. Equipment and Materials

#	Item No.	Item Name	Figure	QTY
1.	09-CABL-3002	Sensor		
2.				
3.				
4.				

# 3. Paste Tube Sensor Calibration

---

1. To start, disconnect the connector (blue), by rotating the nut.



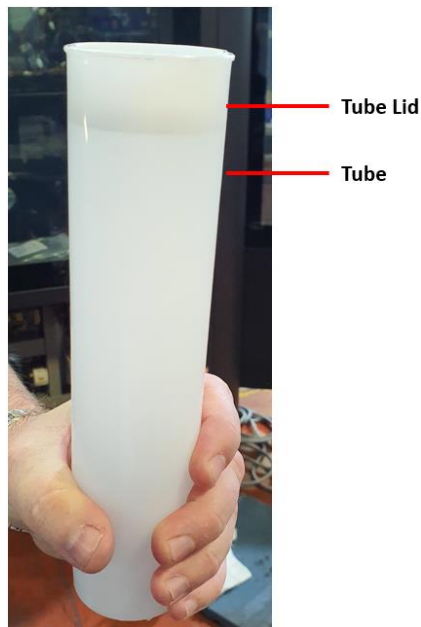
**Figure 1: Paste Sensor with Connector**

---

- 
2. Connect a tube lid to a tube, so that the ends line up as shown in Figure 3.

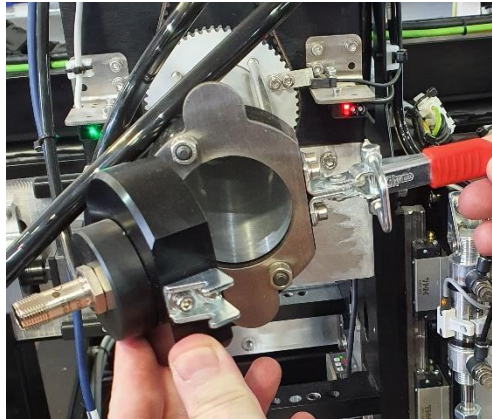


**Figure 2: Tube and Lid Separated**

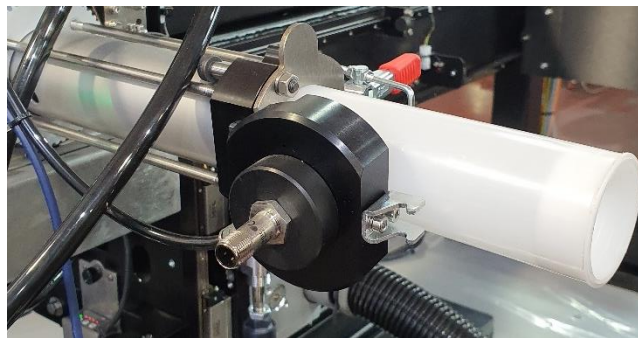


**Figure 3: Tube and Lid Connected with Aligned Ends**

- 
3. Open the latch and fully insert the tube.



**Figure 4: Open Latch**



**Figure 5: Tube Partially Inserted**

- 
4. Once the tube is fully inserted, close the latch.
  5. The connector has two ends: One with holes (sensor connector) and one with pins (cable connector).

Connect the sensor connector (Figure 6) to the sensor with a gentle rotating motion until it latches on, then rotate the nut until it locks in.



**Figure 6: Sensor Connector**

- 
6. Connect the cable connector (Figure 7) to the sensor level cable with a gentle rotating motion until it latches on, then rotate the nut until it locks in.

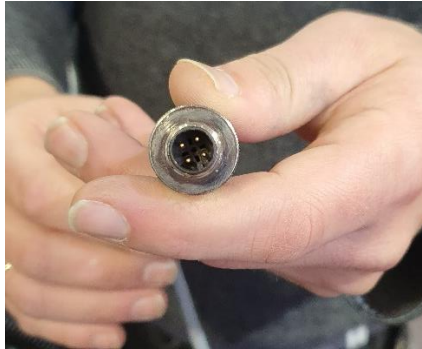


Figure 7: Cable Connector

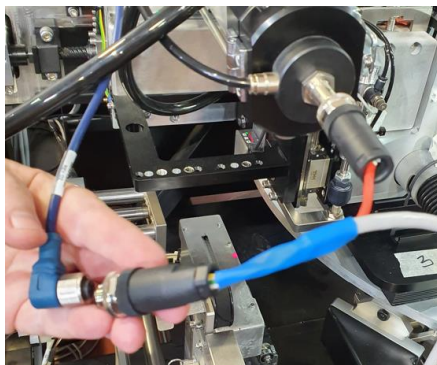


Figure 8: Paste Sensor with Both Connectors

- 
7. Once both connectors are connected, press the button for 3 seconds until the LED (located on the side of the sensor) flashes orange and green.



**NOTE:** After pressing the button, the operation must be completed within 1 minute.

- 
8. Open the latch and remove the tube. Push the tube lid into the end of the tube using a long object such as a screwdriver. Make sure the lid touches the inner end of the tube.
  9. Reinsert the tube, as done in step 3, and close the latch.
  10. Press the button for 1 second, the LED should display a stable green light (not blinking).
-

- Remove the tube, place the lid slightly more than halfway through the tube and reinsert into the sensor.

Ensure that the program sensor reacts correctly (~60%), this can be checked in the GUI Main Screen in Material Level.

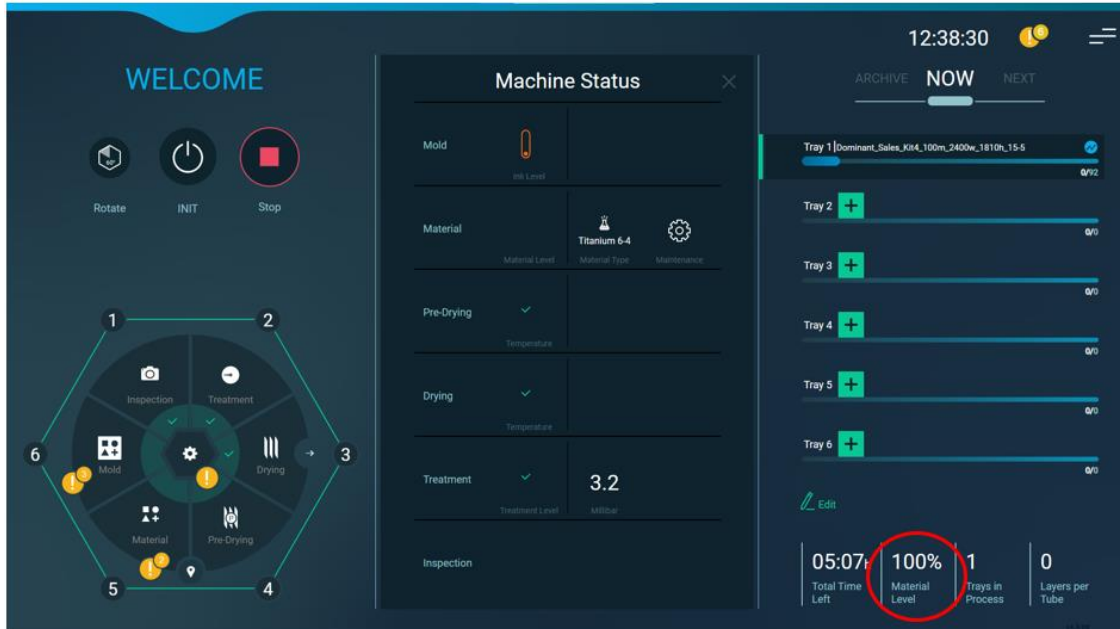


Figure 9: GUI Main Screen - Material Level

- Disconnect the sensor nut and then the cable nut.

- Attach the cable to the sensor.

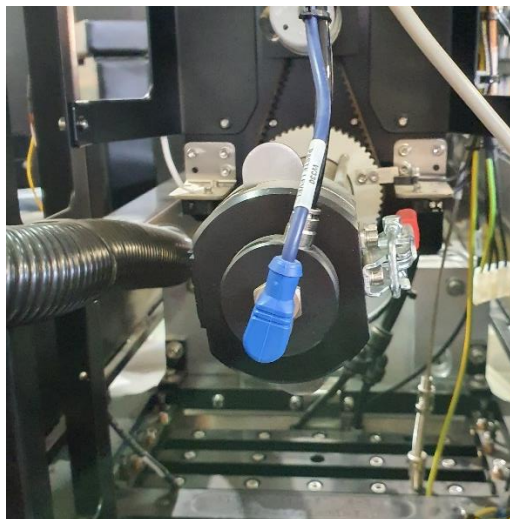


Figure 10: Sensor with Cable



## 4. Revision History

---

Date	Comments	Revision
January 26, 2023	First Release	1.0